

Retrofit Specialist

The Homestead Dairy Barn complex is one example of an adaptive restoration project.

Blow-in Blanket, flash & batt system, air sealing ,fiberglass batt & blown insulation were installed in this project.



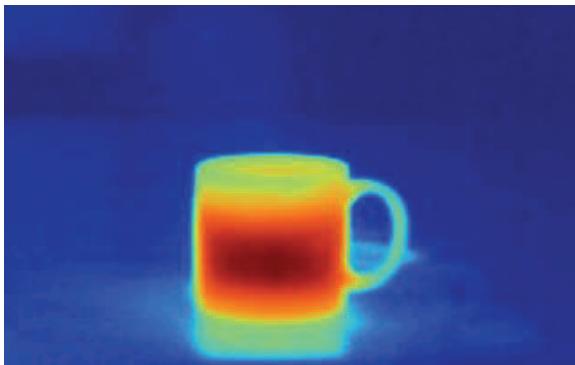
Air Sealing

Well insulated & air sealed homes use up to 40% less energy



Thermal Imaging

Used to locate insulation deficiencies



Nelligan Insulation is a Lynchburg, VA based company established in 1998 that is managed by a team of dedicated professionals who have over 80 years combined experience providing service to building and design professionals throughout central, Southside & southwestern Virginia.

We are dedicated to meeting timely schedules while offering value at the best possible price without reducing the level of workmanship expected by our clients. We do whatever is necessary to bring exceptional quality and service to our customers.



Quality made certain. Satisfaction guaranteed.™



The Energy Efficiency People



- ◆ CertainTeed Insulation
- ◆ Blown Insulation
- ◆ CertaSpray Polyurethane Foam
- ◆ Air Sealing
- ◆ Thermal Imaging
- ◆ Blower Door
- ◆ Tremco Waterproofing
- ◆ Earth Craft Certified
- ◆ STI Firestop Certified
- ◆ BPI Certified Contractor
- ◆ FortiCel Mold Prevention Spray

FREE ESTIMATES

www.nelliganinsulation.com

2539 Fairview Ave.

Lynchburg, VA 24501

434-847-4774 Fax 434-847-1157

nelliganinsulation.com

Solid Waterproofing Solutions



Building code requires foundation waterproofing to resist water under hydrostatic head pressure. Tremco barrier solutions is revolutionizing the foundation waterproofing category by delivering unparalleled resistance to hydrostatic head pressure with our newest formulation of polymer-modified asphalt waterproofing membrane. Along with a Warm-N-Dri foundation board, which protects the membrane and insulates the basement walls, to reduce interior condensation. Tremco has a 30 warranty.

Tremco Enviro-Dri

A weather resistant spray on barrier that replaces house wrap. Protects sheathing from moisture, permeable membrane stops water from entering but allows moisture to escape. Engineered for use behind all cladding systems. It also reduces air infiltration through the exterior walls.

Specified Technologies Inc. The Firestop Authority

We install STI products for life safety & code compliance

Certifications

We are BPI certified

BPI certified professionals are individuals who have proven their skills, meeting stringent, nationally recognized standards by passing both written and field examinations. Ongoing Continuing Education Units (CEUs) keep us on top of emerging issues, technologies and best practices.

Sprayed Foam Systems

Closed cell foam is a medium density, closed cell SPF weighing approximately 2 lbs. per cubic ft. when fully cured. Closed cell foam has an R-value of 6.0 per inch

Open cell foam is a low density, SPF weighing 0.4 to 0.6 lbs. per cubic foot when fully cured. 1/2 lb foam has an R-value of 3.6 per inch.



Flash & Batt system

Flash & batt system combines CertainTeed Green Guard fiberglass batts with air sealing and sprayed closed cell polyurethane foam insulation to provide exceptional energy saving performance at a reasonable cost.

Reasons to airseal your new home:

Air infiltration can account for 30% or more of a home's heating and cooling costs and can contribute to problems with moisture, noise, dust and the entry of pollutants, insects and rodents. Reducing infiltration can significantly cut annual heating and cooling costs, improve building durability, and create a better indoor environment.

Reasons to foam your new home:

Spray polyurethane foam minimizes airflow, seals cracks and crevices and provides structural Strength.

The flash & batt system offers an affordable alternative to filling the entire cavity with spray foam which can be cost prohibitive. Studies by the US department of energy show this to be the most cost effective, energy efficient and environmentally friendly insulation method available today.



Without proper insulation you can actually see air leakage happens in a home, causing drafts and hot & cold spots.