

Retrofit Specialist

The Homestead Dairy Barn complex is one example of an adaptive restoration project. Blow-in Blanket, NESS System, air sealing, fiberglass batt & blown insulation were installed in this project.



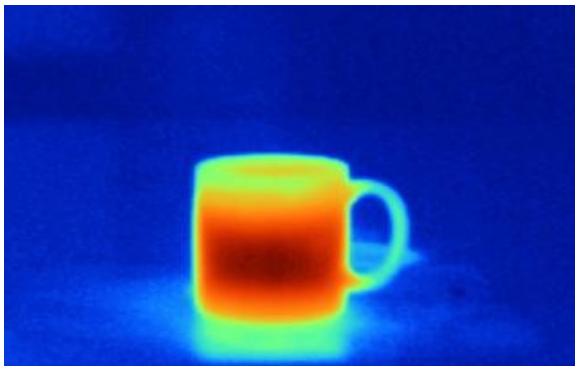
Air Sealing

Well insulated & air sealed homes use up to 40% less energy



Thermal Imaging

Used to locate insulation deficiencies



Nelligan Insulation is a Lynchburg, VA based company established in 1998 that is managed by a team of dedicated professionals who have over 80 years combined experience providing service to building and design professionals throughout central, Southside & southwestern Virginia.

We are dedicated to meeting timely schedules while offering value at the best possible price without reducing the level of workmanship expected by our clients. We do whatever is necessary to bring exceptional quality and service to our customers.



Nelson County Homebuilders Association



The Energy Efficiency People



- ◆ John's Manville Batts
- ◆ CertainTeed Batts
- ◆ Blown Insulation
- ◆ Polyurethane Foam
- ◆ Air Sealing
- ◆ Thermal Imaging
- ◆ Schulte Shelving
- ◆ Earth Craft Certified
- ◆ Tremco Barrier Solutions
- ◆ STI Firestopping

2539 Fairview Ave.
Lynchburg, VA 24501
434-847-4774 Fax 434-847-1157

Solid Waterproofing Solutions



Building code requires foundation waterproofing to resist water under hydrostatic head pressure. Tremco barrier solutions is revolutionizing the foundation waterproofing category by delivering unparalleled resistance to hydrostatic head pressure with our newest formulation of polymer-modified asphalt waterproofing membrane. Along with a Warm-N-Dri foundation board, which protects the membrane and insulates the basement walls, to reduce interior condensation. Tremco has a 30 warranty.

Tremco Enviro-Dri

A weather resistant spray on barrier that replaces house wrap. Protects sheathing from moisture, permeable membrane stops water from entering but allows moisture to escape. Engineered for use behind all cladding systems. It also reduces air infiltration through the exterior walls.

Specified Technologies Inc. The Firestop Authority

We install STI products for life safety & code compliance

Schulte Shelving

We offer a full line of Schulte shelving for your home & garage. From ventilated shelving to Freedom Rail we are able to customize any closet as needed.

Sprayed Foam Systems

Closed cell foam is a medium density, closed cell SPF weighing approximately 2 lbs. per cubic ft. when fully cured. Closed cell foam has an R-value of 6.0 per inch

Open cell foam is a low density, SPF weighing 0.4 to 0.6 lbs. per cubic foot when fully cured. 1/2 lb foam has an R-value of 3.6 per inch.



NESS

Nelligan Energy Savings System
For Maximum Energy Conservation & Value

NESS combines *formaldehyde-free* JM fiberglass batts with air sealing and sprayed closed cell polyurethane foam insulation to provide exceptional energy saving performance at a reasonable cost.



Johns Manville fiberglass batt insulation
Formaldehyde free

